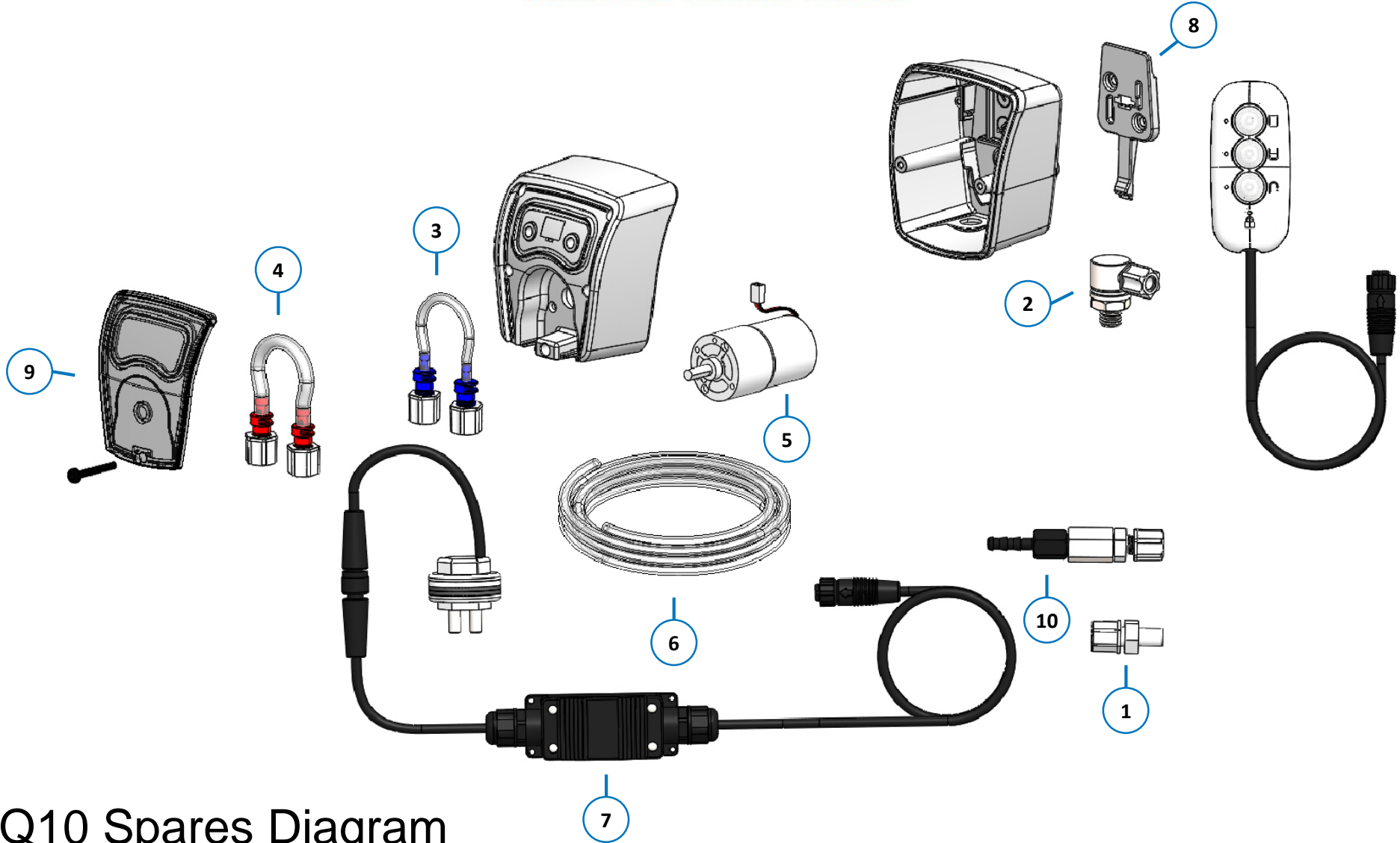


# BRIGHTWELL

REVOLUTIONARY DISPENSING SOLUTIONS



## Q10 Spares Diagram

Copyright © Brightwell Dispensers Ltd. All rights reserved.

Item	Stock Code	Description
1	XSB825	Quantura Rinse Inject EU (5 Pack)
	XSB858	Quantura Rinse Inject US (5 Pack)
2	XSB824	Quantura Comp. Fit Tank Inject S/S (5 Pack)
3	XSB839	Q10 3mm Rinse Tube Assy. (50 Pack)
	XSB840	Q10 3mm Rinse Tube Assy. (10 Pack)
4	XSB841	Q10 5mm Tube Assy. (10 Pack)
	XSB841-EP	Q10 5mm EPDM Tube Assy. (1 Pack)
	XSB842	Q10 5mm Tube Assy. (50 Pack)
5	XSB851	Quantura 10+ Motor 24V Motor
	XSB837	Q10 Motor Loom & Assy.
6	XSB827	Quantura Tube LDPE (3000mm)
	XSB843	LDPE Outlet Tube 6.35mmOD 30m
7	XSB829	Q10+ Probe Kit
8	XSB836	Q10 Mounting Kit (10 Pack)
9	XSB838	Q10 Clear Cover Assy. (5 Pack)
10	XSB852	QD10 D Barbed Injector S/S 4mm (5 Pack)

#### BRIGHTWELL DISPENSERS LTD

Unit 1, Rich Industrial Estate, Avis Way, Newhaven, East Sussex, BN9 0DU, UK

T +44 (0)1273 513 566 F +44 (0)1273 516 134 E [sales@brightwell.co.uk](mailto:sales@brightwell.co.uk) W [brightwell.co.uk](http://brightwell.co.uk)

VAT No: GB 100 1998 47. Company registration No: 0661996. Registered in England.

**BRIGHTWELL**

REVOLUTIONARY DISPENSING SOLUTIONS