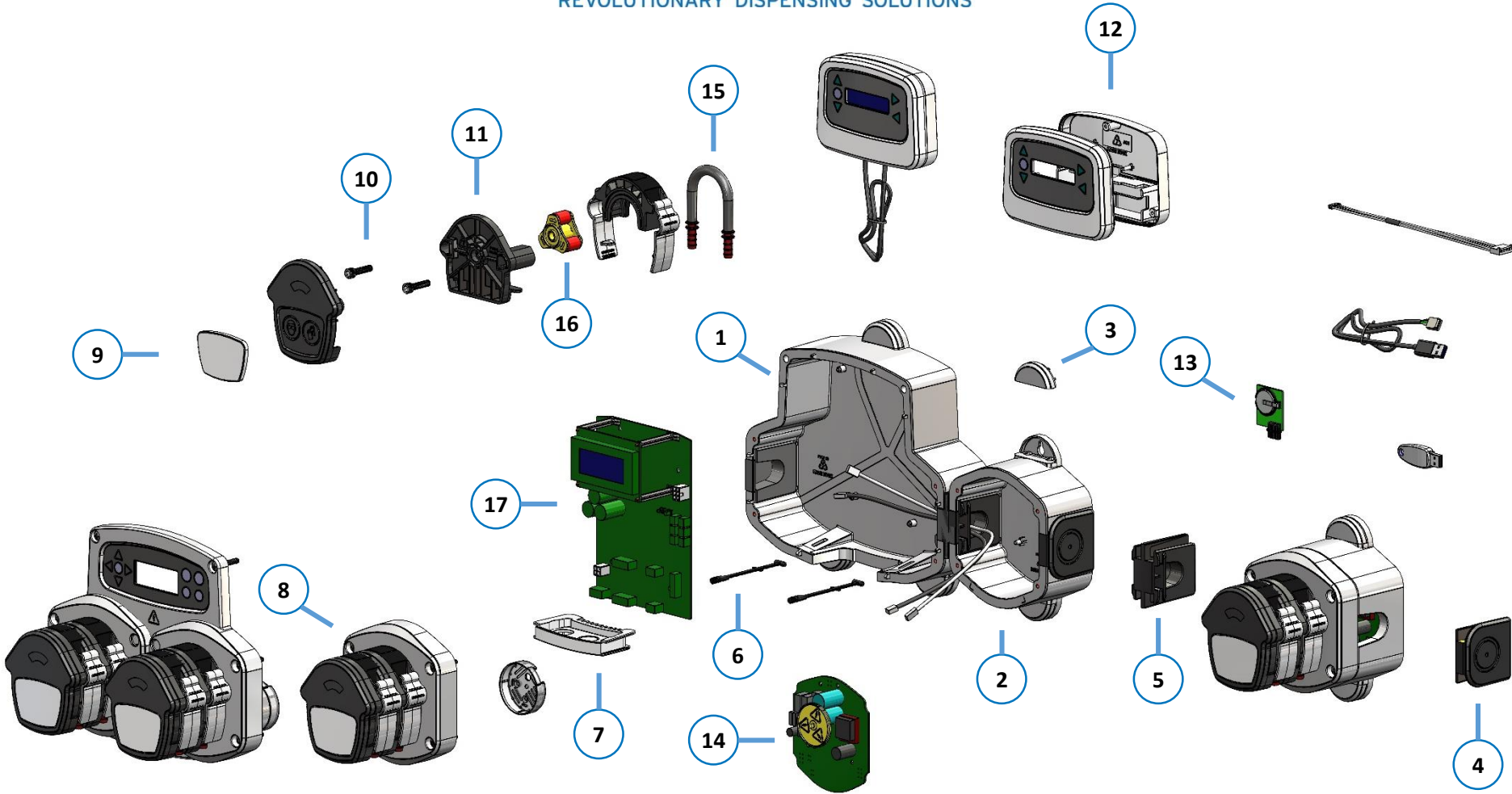


BRIGHTWELL

REVOLUTIONARY DISPENSING SOLUTIONS



Brightlogic Low Flow Spares Diagram

Item	Stock Code	Description
1	XSB051	Dual Motor Control Enclosure
2	XSB053	BRIGHTLOGIC STD PUMP ENCLOSURE
3	XSB060	BRIGHTLOGIC SCREW COVERS -10PK
4	XSB061	BRIGHTLOGIC END WEDGES -10PK
5	XSB062	BRIGHTLOGIC LINK WEDGES -10PK
	XSB062	FR BRIGHTLOGIC LINK WEDGES -10PK
6	XSB063	BRIGHTLOGIC HINGE STRAP -10PK
7	XSB064	BLOGIC CABLE ENTRY (DUAL)
8	XSB103	LOGIC DOUBLE MOTOR LID (DPH)
	XSB105	STD ADD-ON LID (DPH)
9	XSB201	BRIGHTLOGIC HF PUMP BODY 5PK
10	XSB207	L PUMPHEAD SCREWS (SPH)
11	XSB211	BRIGHTLOGIC PLAQUE X10
	XSB214	BLOGIC PLAQUE 160PK - 1 Colour logo 16
	XSB215	BLOGIC PLAQUE 160PK - 2 Colour logo 16
12	XSB069	FORMULA SELECT COVER & MEMBRANE
13	XSB014	REAL TIME CLOCK PCB (1PK)
	XSB015	REAL TIME CLOCK PCB (20PK)

Item	Stock Code	Description
14	XSB004	BRIGHTLOGIC ADD-ON BOARD
	XSB303	LAUND PUMP TUBE: 6MM G-SIL 10PK
	XSB303NS	LAUND PUMP TUBE: 6MM G-SIL 10PK
	XSB303Q	QUICK PUMP TUBE: 6MM G-SIL 10PK
	XSB304	LAUND PUMP TUBE: 6MM G-SIL 50PK
	XSB343	LAUN PUMP TUBE: 6MM B/CHEM: 50 PK
	XSB343Q	QUICK PUMP TUBE: 6MM B/CHEM 50PK
15	XSB344	LAUN PUMP TUBE: 6MM B/CHEM: 50PK
	XSB344Q	QUIC PUMP TUBE: 6MM B/CHEM 50PK
	XSB403	LAUND PUMP TUBE:6MM EPDM:10PK
	XSB403Q	LAUND PUMP TUBE:6MM EPDM:10PK
	XSB404	LAUND PUMP TUBE:6MM EPDM:50PK
	XSB406	LAUND PUMP TUBE:6MM NEW EPDM:4PK
	XSB407	LAUND PUMP TUBE:6MM NEW EPDM:10PK
	XSB408	LAUND PUMP TUBE:6MM NEW EPDM:50PK
16	XSB202	LOGIC 6mm PUMP ROTOR (10pk)
17	XSB003	BRIGHTLOGIC LAUNDRY BOARD

BRIGHTWELL DISPENSERS LTD

Unit 1, Rich Industrial Estate, Avis Way, Newhaven, East Sussex, BN9 0DU, UK

T +44 (0)1273 513 566 F +44 (0)1273 516 134 E sales@brightwell.co.uk W brightwell.co.uk

VAT No: GB 100 1998 47. Company registration No: 0661996. Registered in England.

BRIGHTWELL
REVOLUTIONARY DISPENSING SOLUTIONS

M0252 Issue 2.0
April 2021