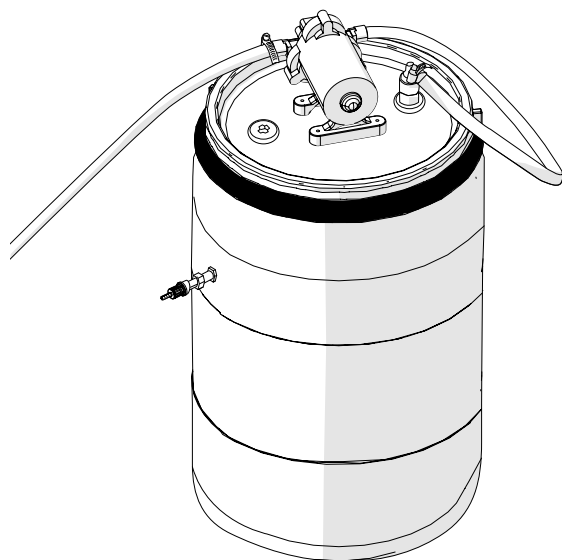




## BOOSTER TANK (US)

MULTIPLEX ACCESSORY



### Description

- Accessory for Multiplex dispensers, specifically designed to ensure a reliable water supply to our industrial laundry dosing equipment.
- Optional but recommended installation whenever the water pressure and supply does not meet the requirements of our dosing equipment.
- Optimised connection and operation with the Multiplex dosing unit, ensuring that the correct water pressure and flow rate are maintained at all times.
- Ensuring an adequate water supply is essential to guarantee the efficiency of the dosing process and optimise wash performance

### Technical Specifications

	Value
MATERIALS	(Pump) EPDM/Santoprene (Tank) High Density Polyethylene / Galvanised steel with powder coated paint
CONNECTORS	1/2"-14 MNPT
TANK CAPACITY	32 gallons
PRESSURE RANGE	Outlet - 60 PSI (max) 5 gallons/min (max)
POWER	115 VAC 7A (Max)
NOISE	65 DB

### Details

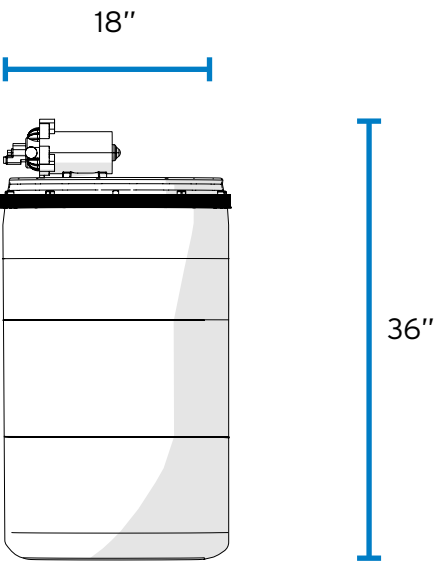
Part Code	Description
A500BTUSA/U9	MULTIPLEX BOOSTER TANK (US)

**T** (+1) 913-956-4909 **E** sales@brightwell-inc.com **W** brightwell-inc.com/

Brightwell Dispensers Inc. 9858 Britton Street, Lenexa, KS, 66219

All information in this data sheet is correct at the time of printing and is subject to change without notice.

# Diagram

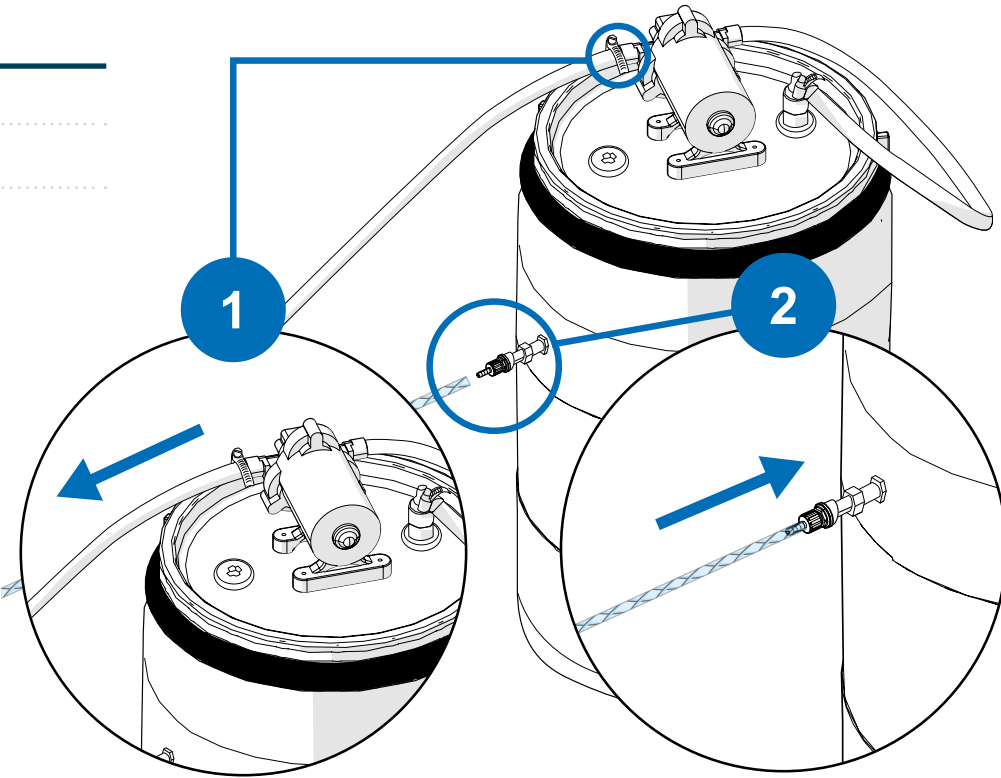


## Dimensions (inches)

Diameter	Height
18	36

## Connection

- 1 Water Outlet
- 2 Water Inlet



T (+1) 913-956-4909 E sales@brightwell-inc.com W brightwell-inc.com/

Brightwell Dispensers Inc. 9858 Britton Street, Lenexa, KS, 66219

All information in this data sheet is correct at the time of printing and is subject to change without notice.